

DEPARTMENT OF INTEGRATED DESIGN
UNIVERSITY OF MORATUWA

TITLE : B.Des. APTITUDE TEST
DATE : March 2017
DURATION : Three [3] hours

INSTRUCTIONS

1. Answer all the questions.
2. Answers should be given in the question paper itself.
3. All the questions should be answered in English.

QUESTION 01. [10 Marks]

Make a pencil sketch of a transparent drinking glass, half filled with water and a stainless-steel spoon in it.
Do not use any instrument like ruler. Do not use colors.
Your drawing will be evaluated by the ability to achieve a realistic three-dimensional effect.

Q.01	10%	
Q.02	15%	
Q.03	10%	
Q.04	10%	
Q.05	15%	
Q.06	15%	
Q.07	10%	
Q.08	15%	
TOTAL MARKS		
NUMBER		5

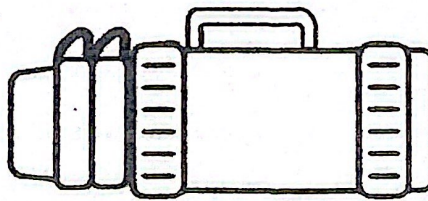


QUESTION 02. [15 Marks]

Three products are shown below. Show the details of each product through an exploded diagram or a sectional drawing so that the construction of the product is clear. Mention the materials recommended for each component.

i]

PHOTO COPY SERVICES
UNIVERSITY OF MORATUWA

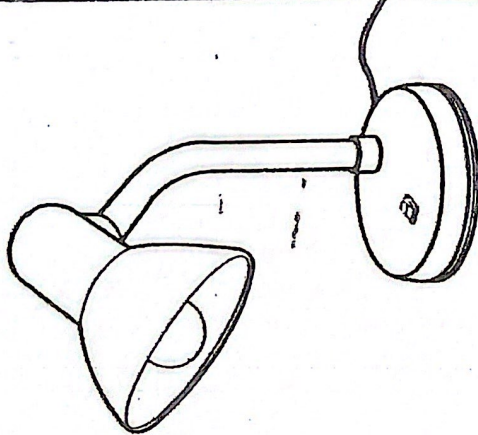
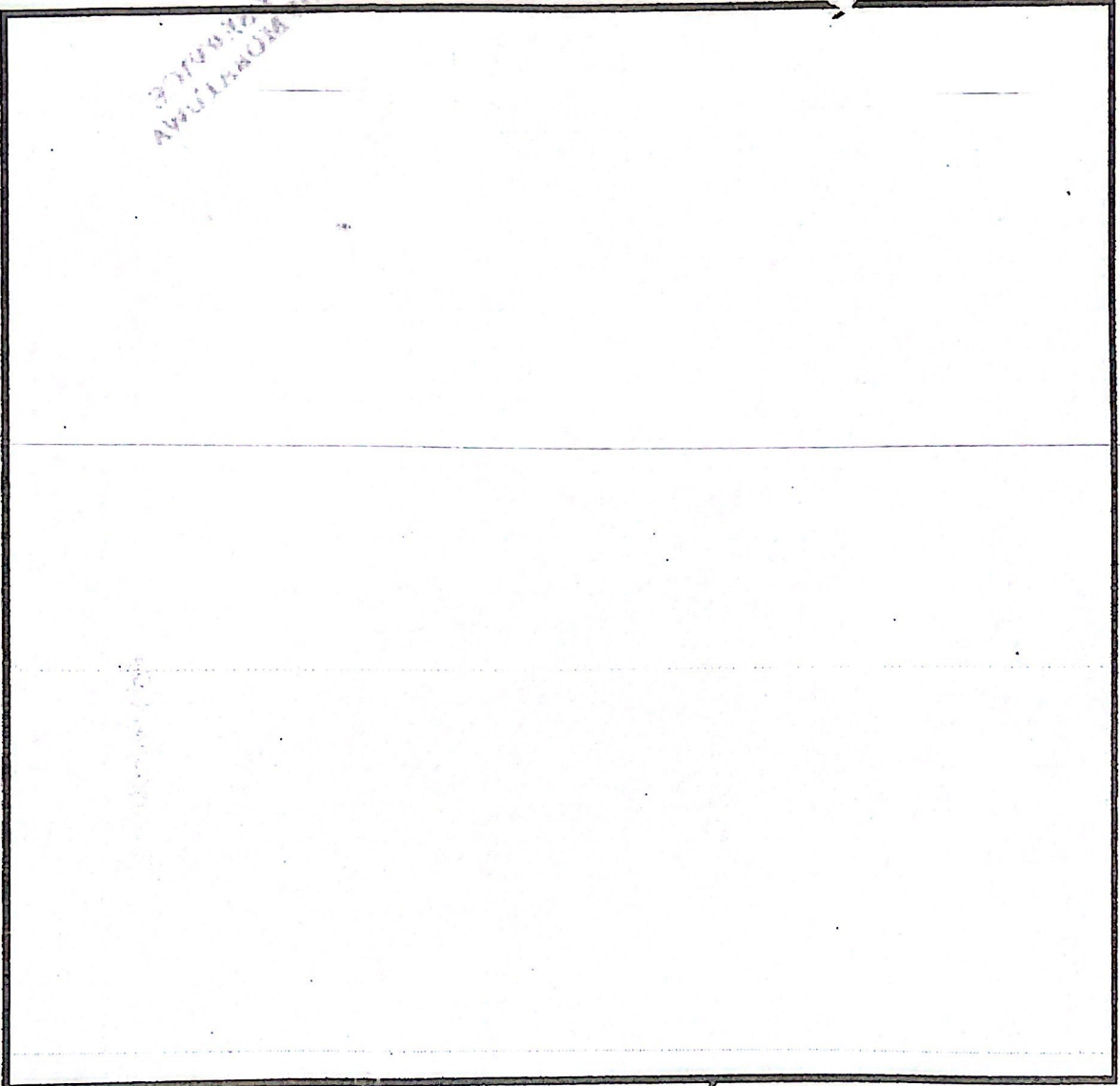


INDEX NUMBER



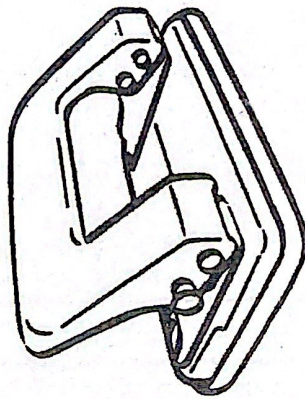
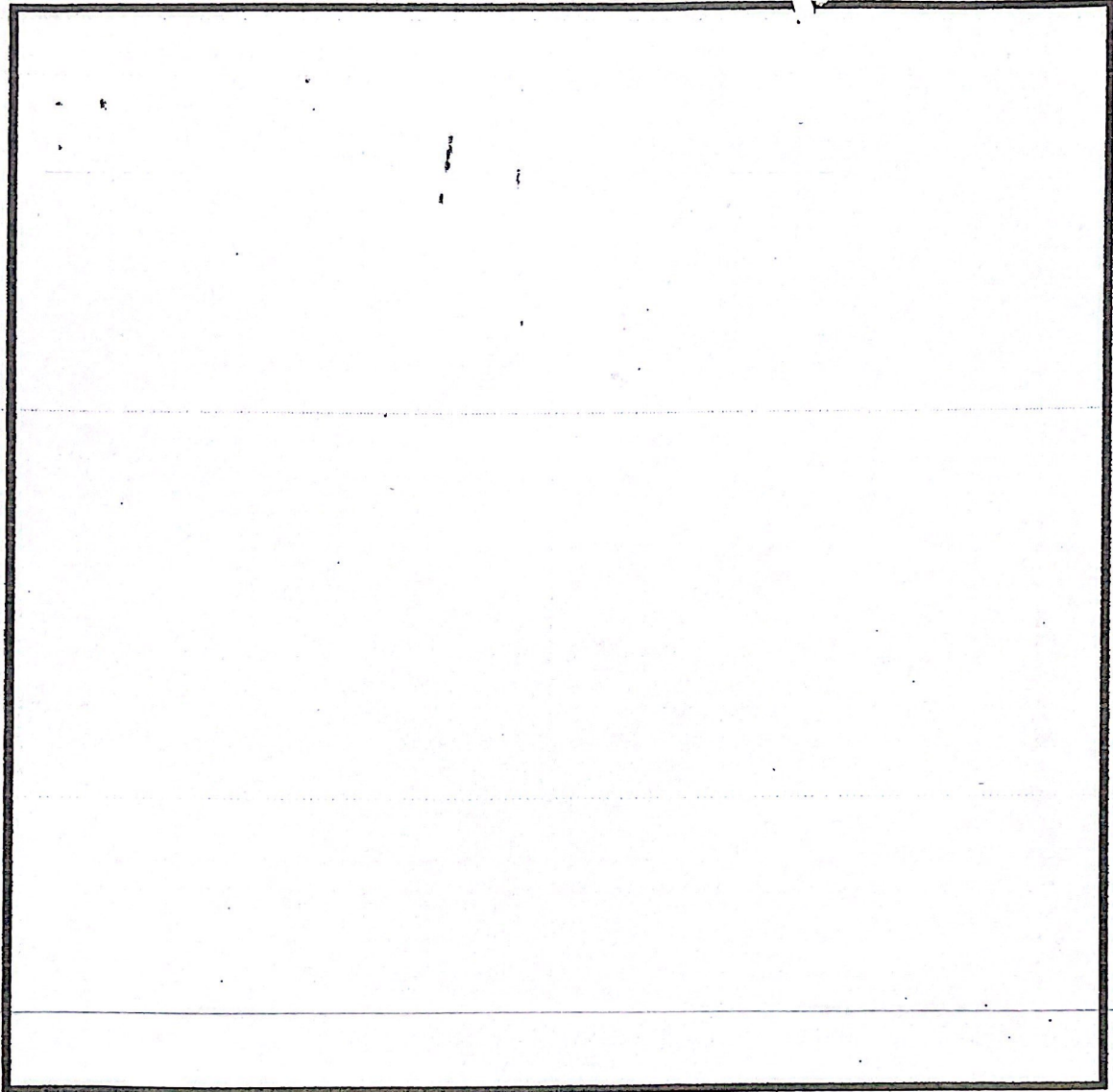
UNIVERSITY OF MORATUWA
APPTITUDE TEST GUIDER

INDEX NU	52
----------	----



ii]

INDEX NUMBER



WUS
PHOTO COPY CENTER
UNIVERSITY OF MORATUWA



PHOTO COPY PROHIBITED
UNIVERSITY OF MORATUWA

QUESTION 03. [10 Marks]

Describe with visuals, a step-by-step procedure to make a kite, in five steps. Supplement your visuals with appropriate text. You will be evaluated by your ability to articulate clearly the sequential instructions and ability to design visual based instructions.

The form consists of five empty rectangular boxes arranged in a grid. The top row contains one large box. The middle row contains two boxes of equal size. The bottom row contains two boxes of equal size. These boxes are intended for the student to draw and write instructions for making a kite.

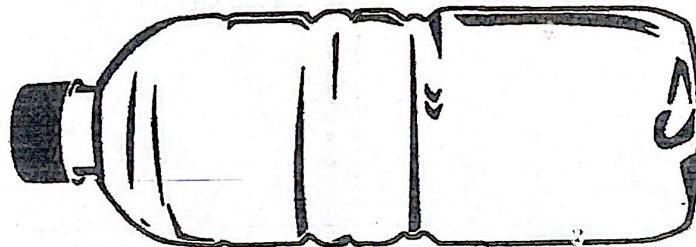


QUESTION Q4. [10 Marks]

Introduce ten different uses for discarded empty drinking water bottles [Material - Polyethylene terephthalate] as shown below.

Explain your ideas with short notes and sketches in the space provided.

You will be evaluated by the variety of uses, practicality and innovation.



--	--

INDEX NUMBER

PHOTO COPY SUBJECT
W U P

INDEX NUMBER
54



UNIVERSITY OF MORATUWA
APPTITUDE TEST GUIDER

INDEX NUMBER

UNIVERSITY OF MORATUWA
PHOTO COPY SERVICE
WUS



UNIVERSITY OF MORATUWA
PHOTO COPY NOT VALID
W U O

INDEX NUMBER

Page 09/13

QUESTION 05. [15 Marks]

As a Sri Lankan designer, how would you tackle the issues mentioned below?
Describe in not more than fifty words.

- a) Child labor
- b) Ethnic conflict
- c) Dengue problem

a]

b]

c]

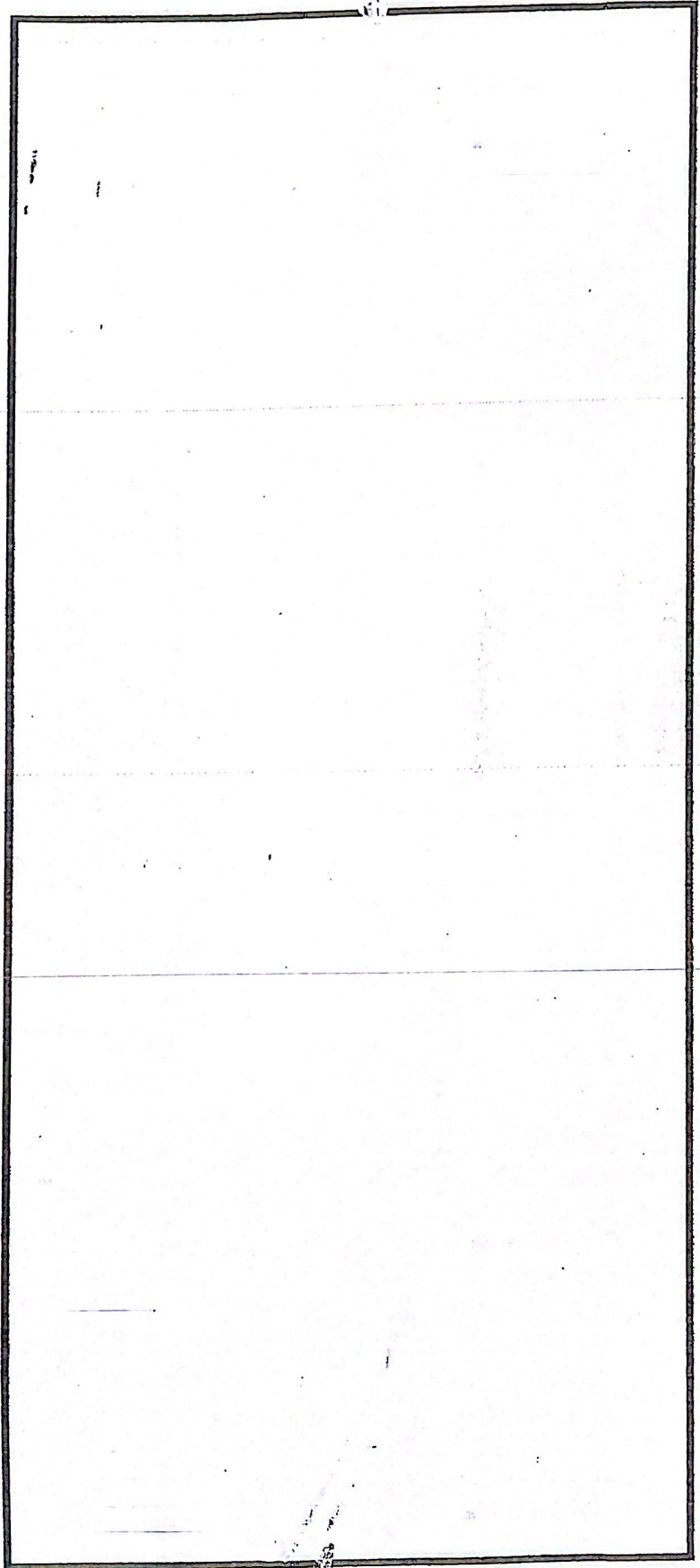


QUESTION 06. [15 Marks]

Design a multi-purpose walking stick for the elderly.

State in your view, five problems that arise with a conventional walking stick. Present your solutions through sketches, showing the overall form, different functions and its construction details.

Your work will be evaluated on the basis of your understanding of user needs and how you meet them in the final design.



QUESTION 07. [10 Marks]

Public Utilities Commission of Sri Lanka (PUCSL) has announced the implementation of a national standard for electricity power outlets and plugs for non-industrial premises in Sri Lanka to strengthen the safety of electricity consumptions in the country. According to the newly introduced standards the type G plugs and outlets, commonly known as 13 ampere square pin type would be the national standard from August 2016. Furthermore, the PUCSL has announced the public to switch to the new standards for achieving a higher quality in electricity consumption.

- Courtesy of PUCSL press release Aug 2016

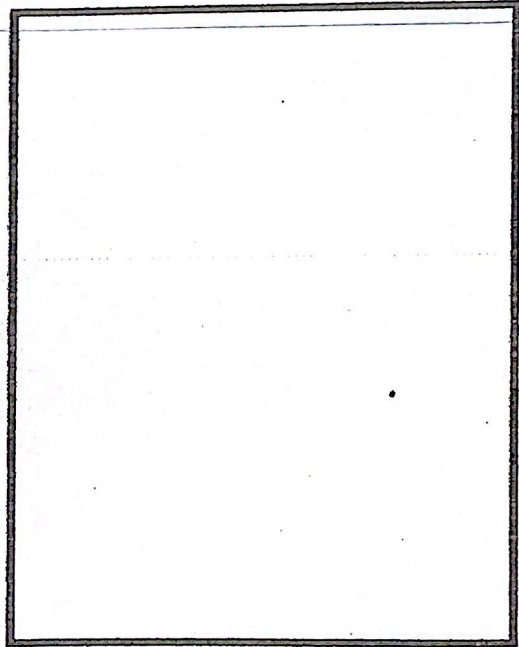
You are given a task of communicating the above change to the electricity consumers and trade sector of Sri Lanka across print and electronic media and make (inform) the public to follow the new standards.

[Pay more attention to the terms underlined.]

- a) Propose an effective and creative name for this campaign (maximum 4 words).
- b) Using the above proposed name, create an icon (to be) for the campaign. The icon should be simple and memorable. Use the below cage to illustrate the icon.
- c) Create a print comic to be published in the 'science and modern world' section of a National newspaper. Illustrate your comic in the given space.

a)

b)



INDEX NUMBER



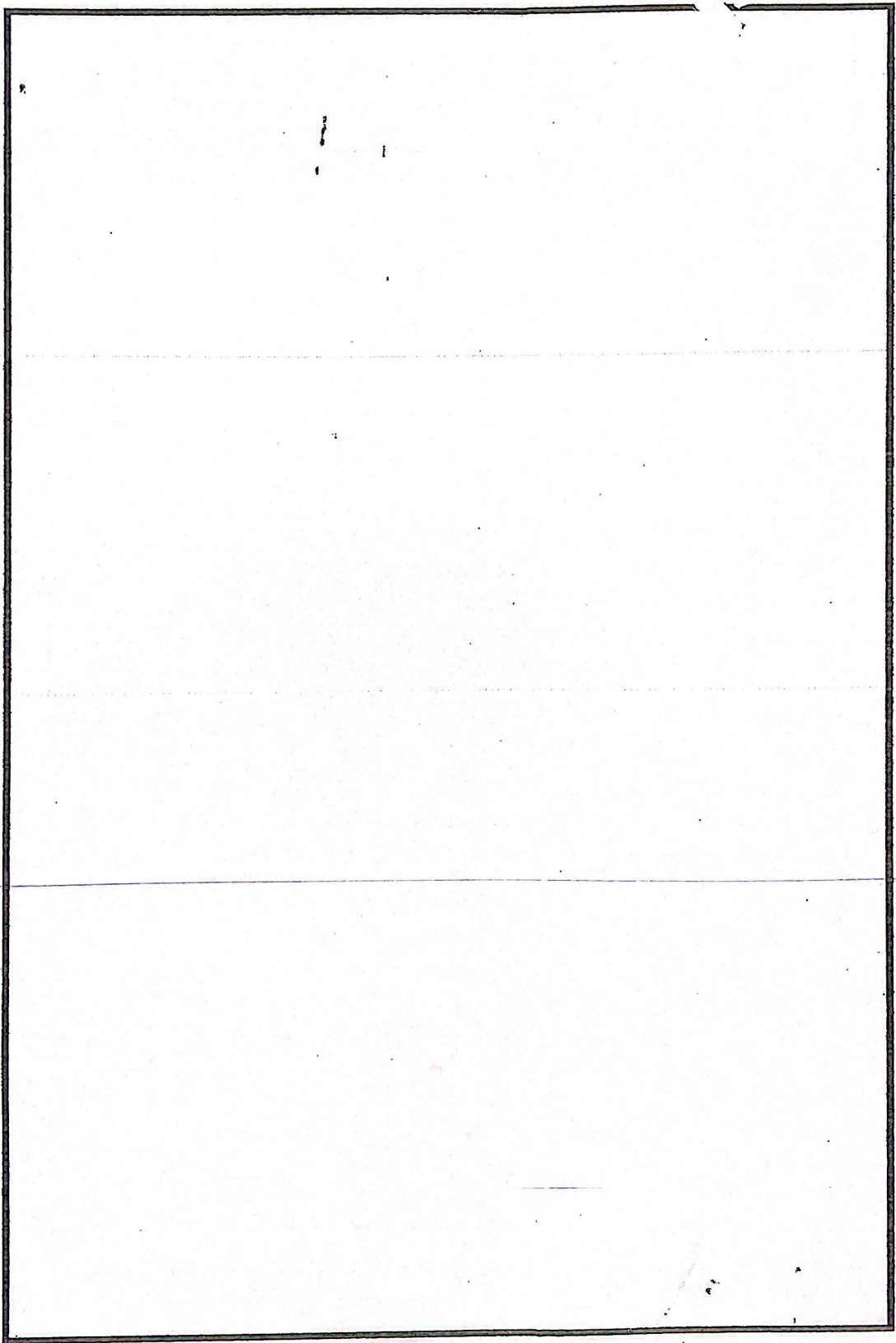


PHOTO COPY SERVICE
UNIVERSITY OF MORATUWA
WUS

QUESTION 08. [15 Marks]

Human-elephant conflict is a common issue related to most of the rural areas in Sri Lanka. The electrical fence is the most commonly used system solution to minimize the issue.

Propose a concept for a new system solution to minimize the conflict. Present your concept through sketches and appropriate notes in the space given below. You will be evaluated by the practicality, innovativeness and the comprehensiveness of the proposal.

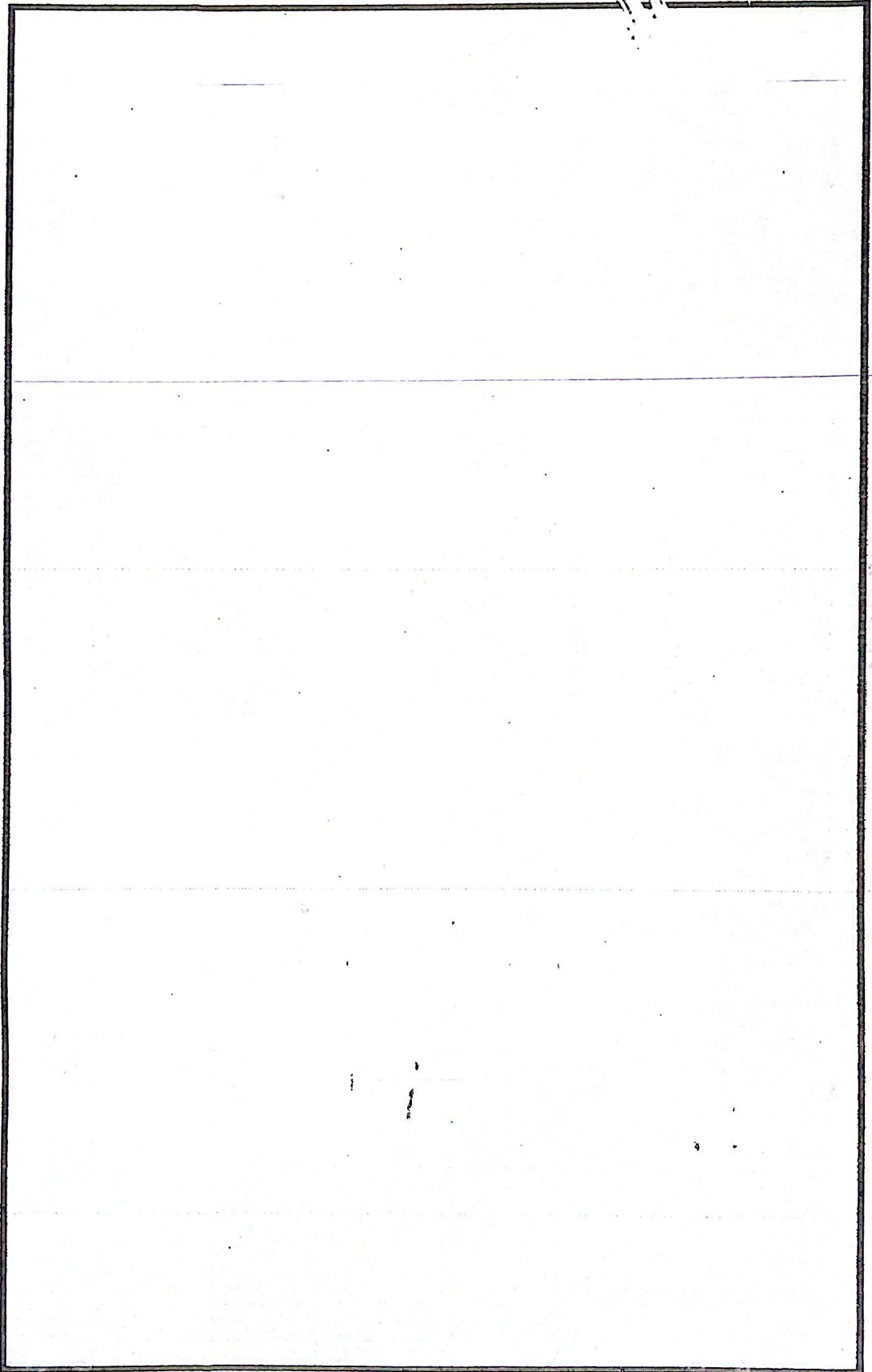


PHOTO COPY PROHIBITED
M 112

INDEX NUMBER

54