

PHOTO COPY SERVICE
UNIVERSITY OF MORATUWA

Department of Architecture

Faculty of Architecture - University of Moratuwa, Sri Lanka
March 2018



APTITUDE TEST

for the Admission to Bachelor of Architecture (B.Arch.) Honors Degree and
Bachelor of Landscape Architecture (BLA) Honors Degree-2018

Three Hours- 03 Hrs - for both Section 1 and Section 2

Instructions to Candidate

- 1.0 Answer all three questions.
- 2.0 To pass this aptitude test, a candidate should achieve a minimum score of 40% of the allocated marks for the each "Section".
- 3.0 Questions can be answered in ENGLISH only.
- 4.0 All questions to be answered on the question paper it-self.
- 5.0 Write your Index Number in all answer sheets.
- 6.0 Section 2 with 30 MCQs will be given one hour before the closing time.
- 7.0 Stop when instructed and place paper face down on your desks.
- 8.0 See the page numbers in order – this paper has 14 pages
- 9.0 **DO NOT USE COLORS** for drawings – use only graphite (B) pencils

Section 1	
Question One	/20
Question Two	/20
Question Three	/10
Question Four	/20
Section 2	
30 MCQs	/30
Total	/100

This paper contains Two Sections.

Section 1 will be given at 09.00 am
This section has 4 general type questions

Section 2 will be given at 11.00 am
This section has 30 Multiple Choice Questions

UNIVERSITY OF MORATUWA
DEPARTMENT OF ARCHITECTURE
AVULU KALAMU
SRI LANKA

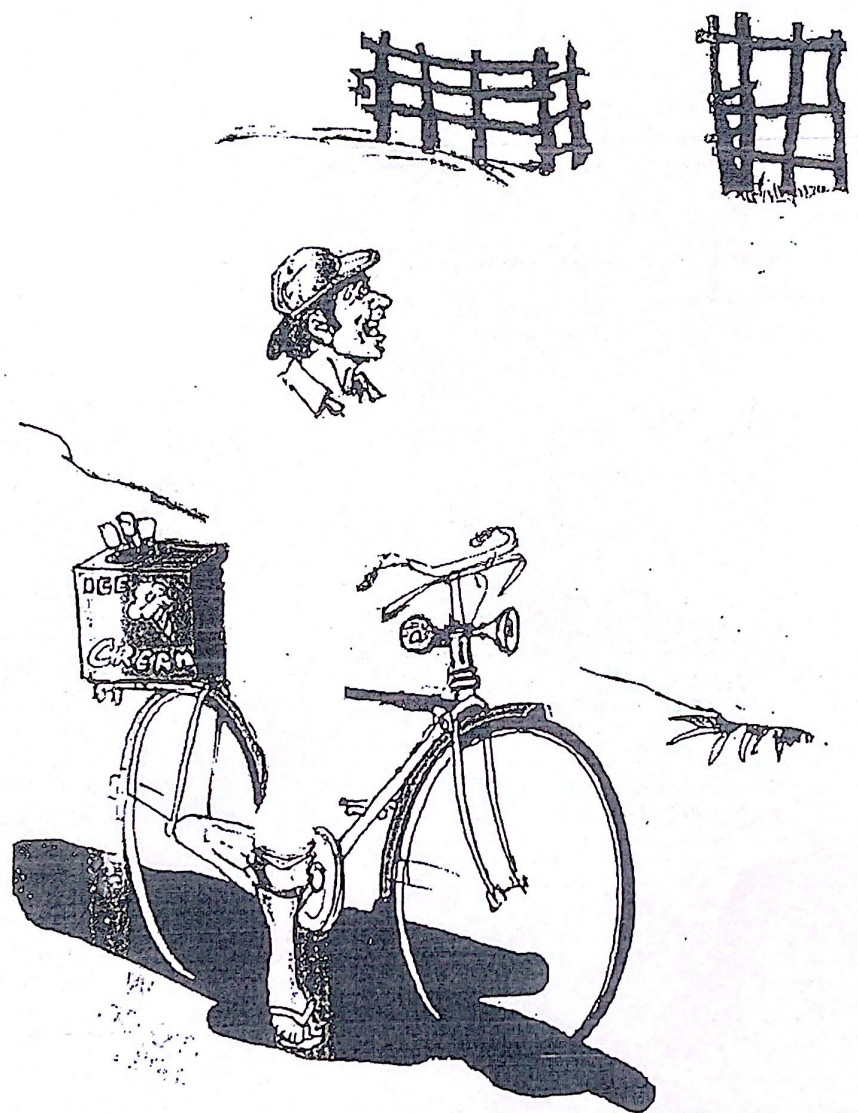
UNIVERSITY OF MORATUWA
DEPARTMENT OF ARCHITECTURE
AVULU KALAMU
SRI LANKA

This page is BLANK – do not write or draw



Section 1 All questions needs to be answered on the question paper itself
(Section 2 will be given at 11.00 am)

Question One – 20 marks Use Graphite Pencil lines and hatches (shading) only.



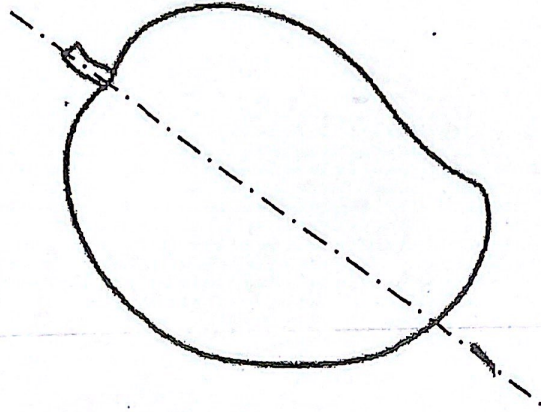
A human activity is given in the “incomplete picture” above. Imagine an interesting incident and a dialogue happening in an environment of your imagination involving another human figure.

- 1) Complete the “outline” of the human figure in this picture highlighting a creative posture (8 marks)
- 2) Complete the background of the picture with appropriate details of your imagination. You may show elements of built or natural environments. (12 marks)

Index No: (Aptitude Test 2018 | B Arch Hons and BLA Hons | Dept of Architecture | University of Moratuwa, Sri Lanka)

Question Two – 20 marks

The following figure shows a graphical representation of a mature Mango. This Mango will be cut along the dotted line given and separate it into two sections.



- A. Illustrate in the space given below what you would see inside “any one of sections” of the Mango, highlighting the different visible layers. (05 marks)
- B. Highlight and label the hardest part inside the Mango “clearly and innovatively” (02 marks)

Space for Question 2 (A and B)



C. Imagine that you will receive the hardest part which, is drawn in *Sections A and B of the Question 2*, protected with chemicals to be used for a longer life span in day to day living AND “50” or “100” times bigger than the actual size seen in the market.

Illustrate one way of using this hardest part innovatively in your house or garden. If necessary you may use other materials such as timber, steel, fabrics, cables or any other in combination with the hardest part of mango. Draw only for ONE situation of 50 or 100 times of the actual size.

Use Graphite Pencil lines and hatches/shading only. (08 marks)

Space for Question 2 (C)

5 | Page

Index No: (Aptitude test 2018 | B.A. | Architecture | Dept of Architecture | UOM, Sri Lanka)



APTITUDE TEST GUIDER

The leading aptitude test guiding programme (University of Moratuwa: aptitude tests)

D. Illustrate five (05) fabricating and fixing methods that you will use in your creation.
(05 marks)

Space for Question 2 (D)

Index No: (Aptitude Test) 3 Arch Hons and BLA Hons | Dept of Architecture | UOM, Sri Lanka



Question Three -10 marks

Identify the given figures and write three (03) key words explaining each.



Figure Name.....

- a.
- b.
- c.



Figure Name.....

- a.
- b.
- c.

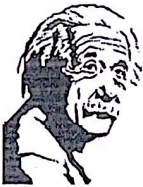


Figure Name.....

- a.
- b.
- c.



Figure Name.....

- a.
- b.
- c.



Figure Name.....

- a.
- b.
- c.

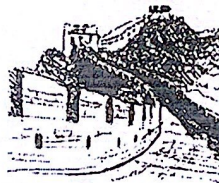


Figure Name.....

- a.
- b.
- c.



Figure Name.....

- a.
- b.
- c.

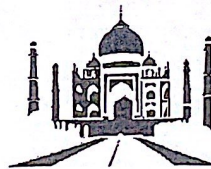


Figure Name.....

- a.
- b.
- c.



Figure Name.....

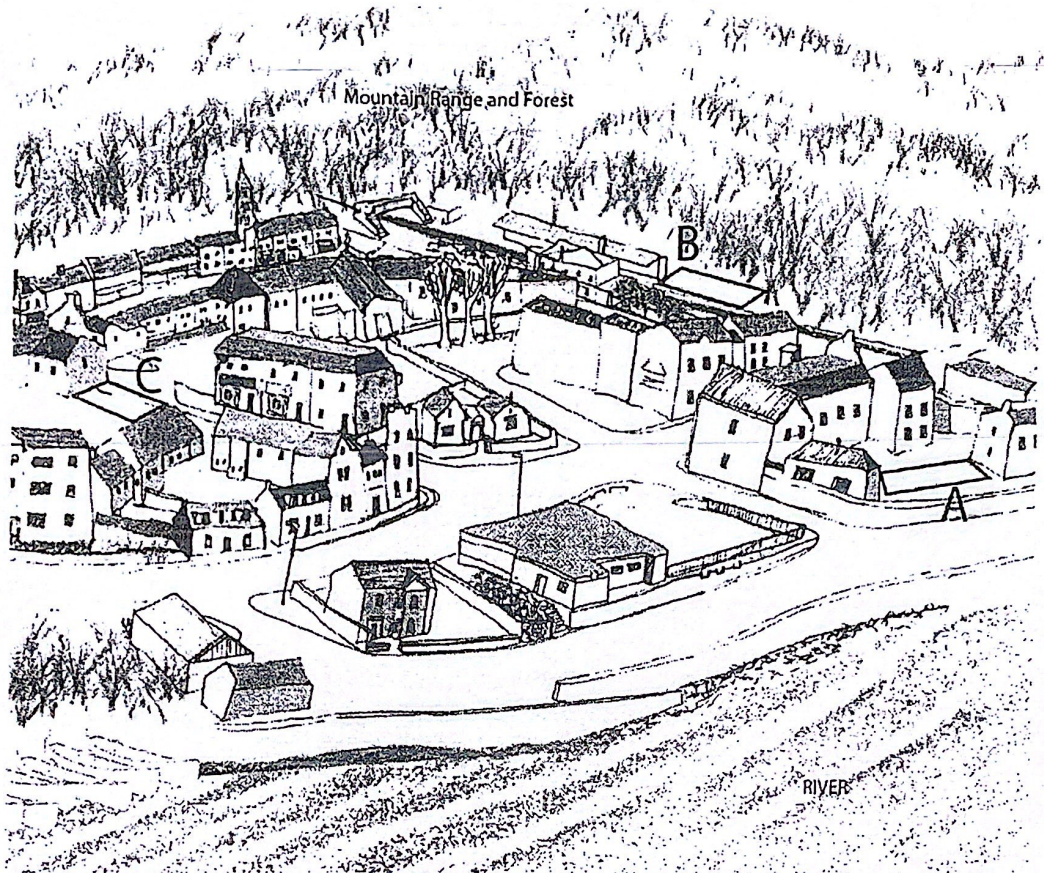
- a.
- b.
- c.



Figure Name.....

- a.
- b.
- c.

Question Four - 20 marks



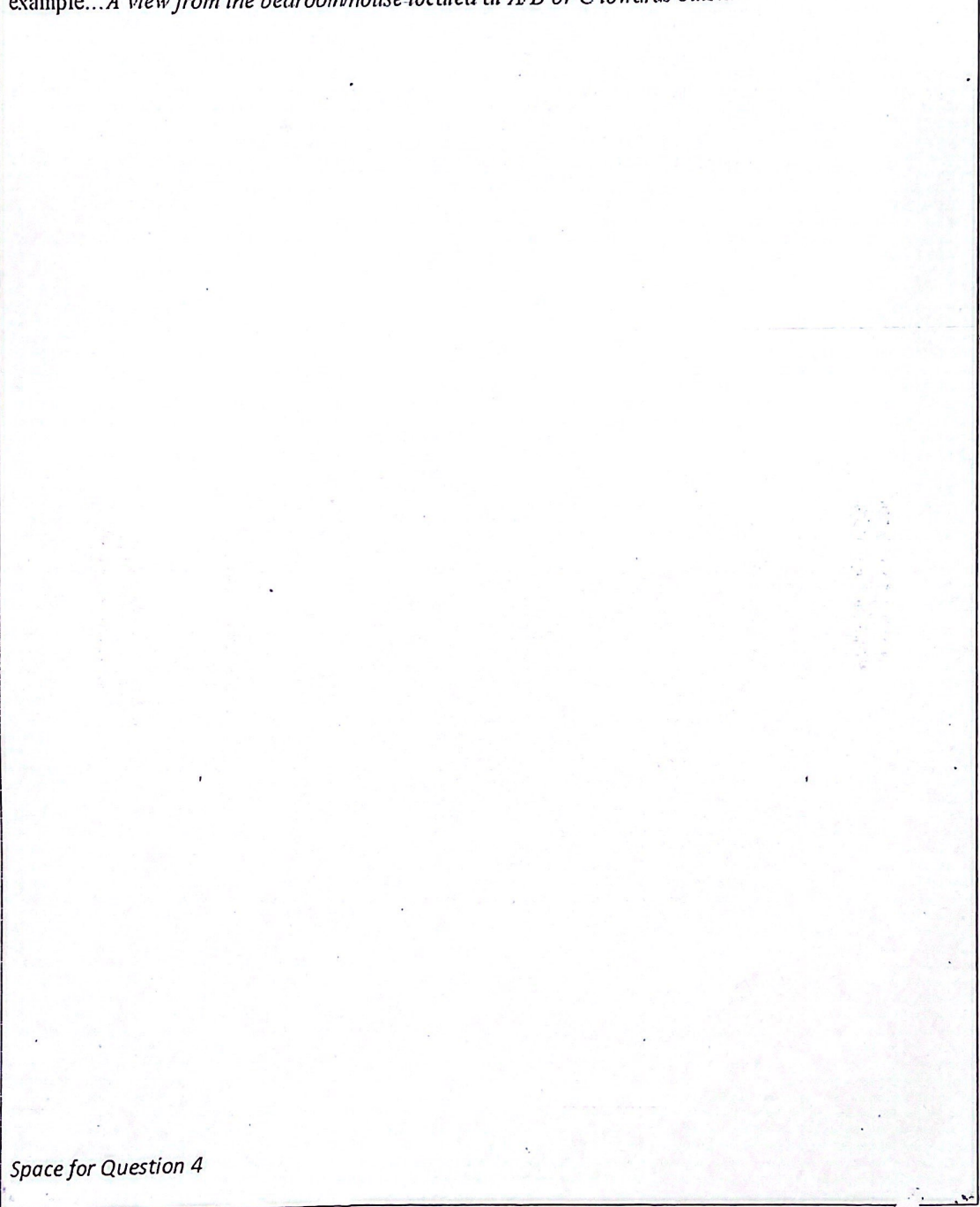
The image given is a beautiful town located between a river and a forest. Please observe it carefully and identify the highlighted locations A, B and C.

- (i). Imagine that you are walking through streets of the town to visit the given locations.
- (ii). Write what you would feel when you reach each location (A, B and C) in THREE short sentences in the space given below.

Location A	Location B	Location C
1. _____ _____	1. _____ _____	1. _____ _____
2. _____ _____	2. _____ _____	2. _____ _____
3. _____ _____	3. _____ _____	3. _____ _____

PHOTO COPY SERVICE
UNIVERSITY OF MORATUWA

(i). Draw the best view that you would expect to enjoy through an opening of your bedroom or house located in one of the locations (A, B or C). Name the location (whether A, B or C) below the picture you draw.
example... *A view from the bedroom/house located at A/B or C towards outside*



Space for Question 4

Index No: (Aptitude Test 2018 | B Arch Hons and BLA Hons | Dept. Architecture | UOM, Sri Lanka)

This side is BLANK – do not write or draw

Index No: (Aptitude Test 2018 | B Arch Hons and BLA Hons | Dept of Architecture | UQM, Sri Lanka)

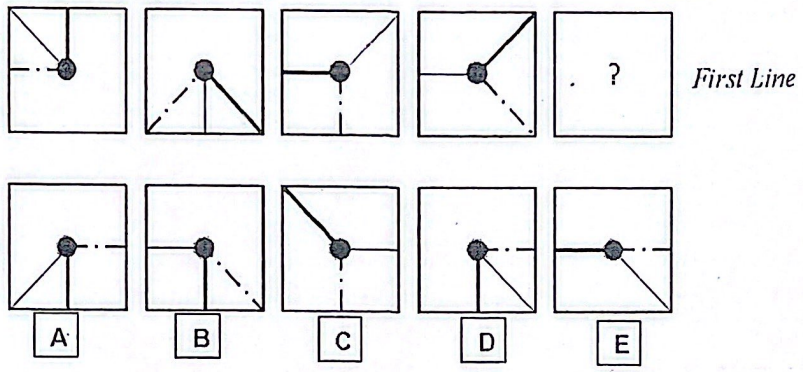
UNIVERSITY OF MORATUWA
DEPARTMENT OF ARCHITECTURE
APR 2018



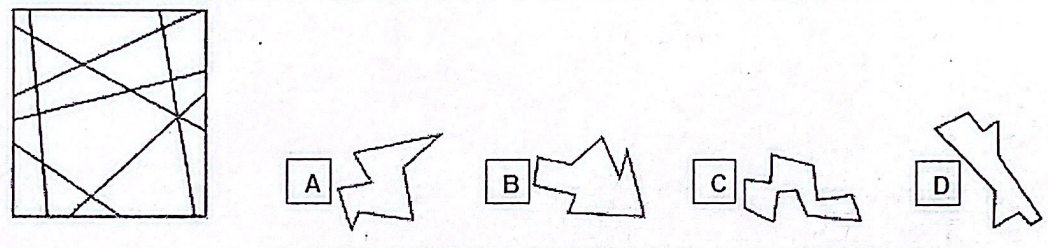
Section 2 All questions needs to be answered on the question paper itself
 STOP when instructed and place paper face down on your desk



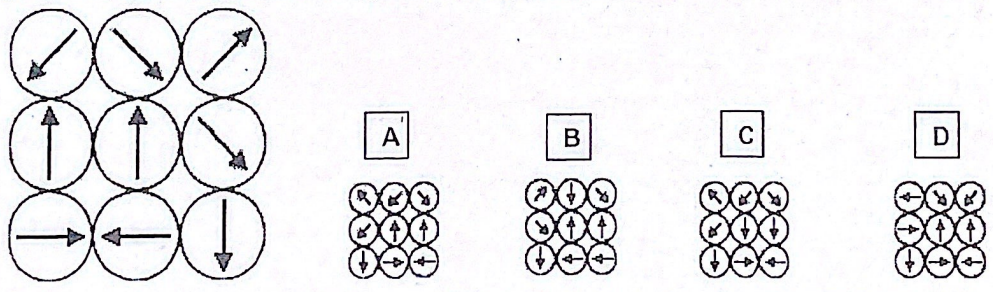
Question 1-Select the matching diagram from A to E to complete the pattern given in the first line.
 Circle your correct answer from A, B, C, D and E



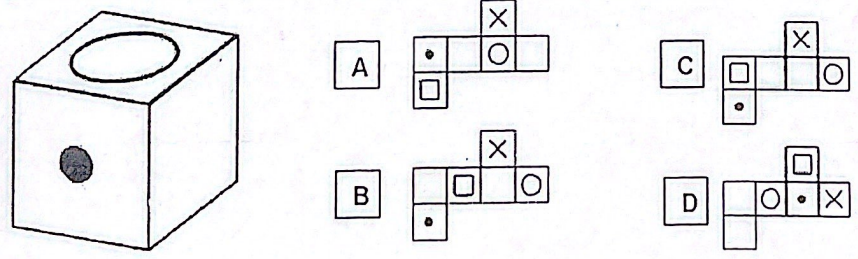
Question 2-Which of the following shapes (A, B, C, D) is found within the square on left



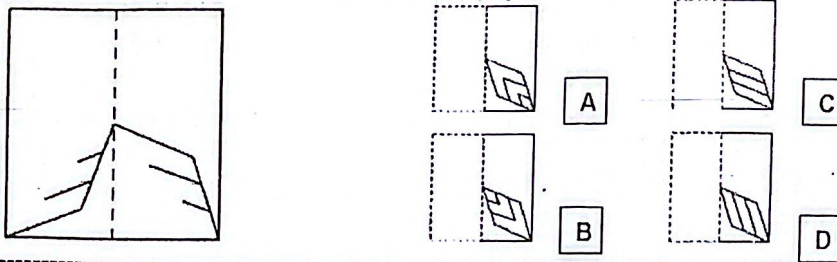
Question 3-Choose the mirror image of the shape on the left



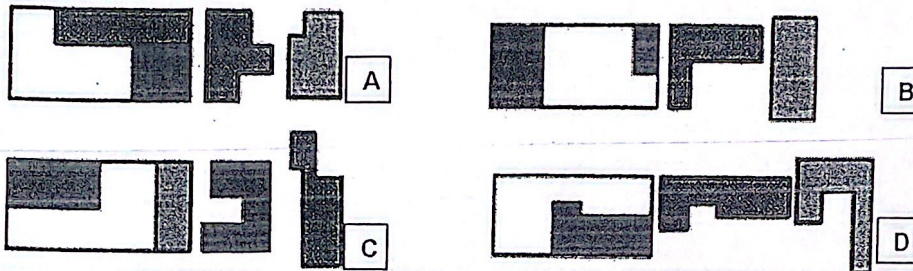
Question 4 - Find the pattern that can be folded into the object below



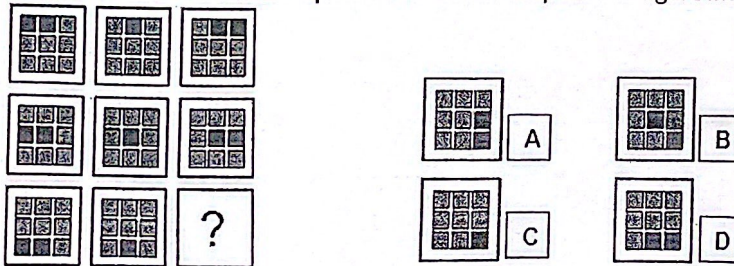
Question 5-How would the pattern appear when the transparent sheet is folded along the dotted line?



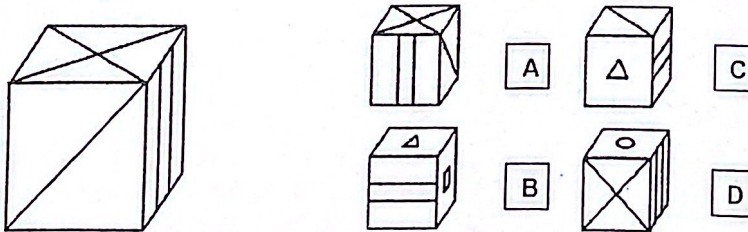
Question 6-Which of the puzzles can be solved using the two elements on the right



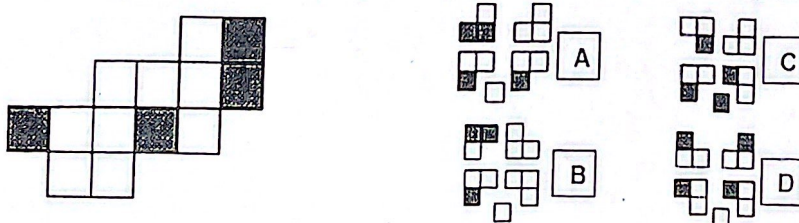
Question 7-Select a suitable option that would complete the figure matrix



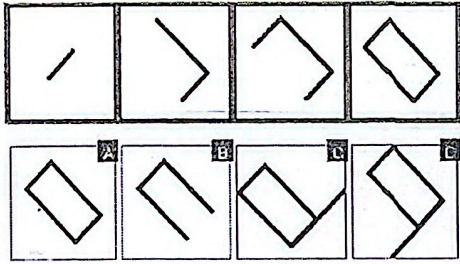
Question 8-Which cube is the same seen from another perspective? Every side of the cube has a different pattern



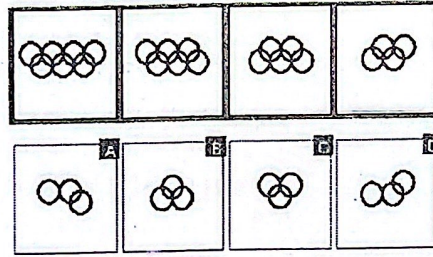
Question 9-Which of the five groups on right can be combined to make the figure on left



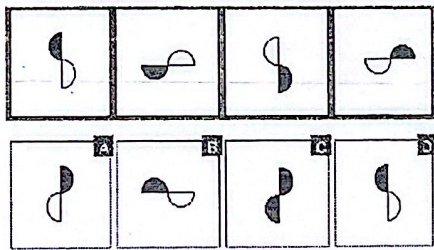
Question 10- What is the next suitable figure from bottom row



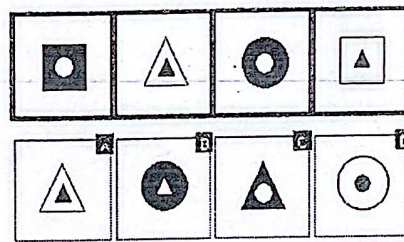
Question 11- What is the next suitable figure from bottom row



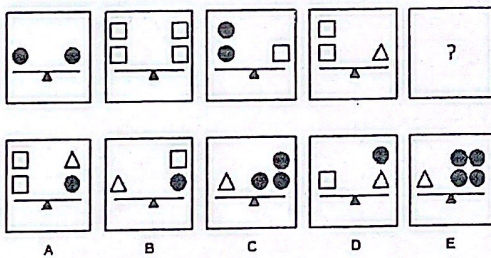
Question 12- What is the next suitable figure from bottom row



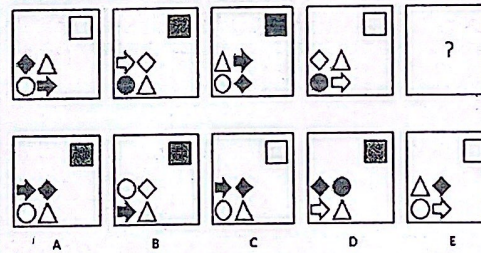
Question 13- What is the next suitable figure from bottom row



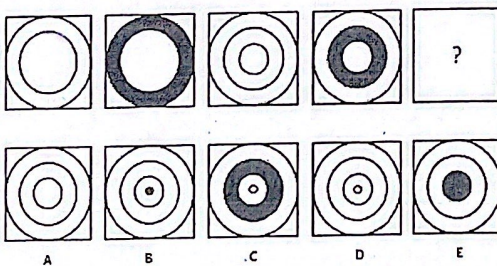
Question 14- What is the next suitable figure from bottom row



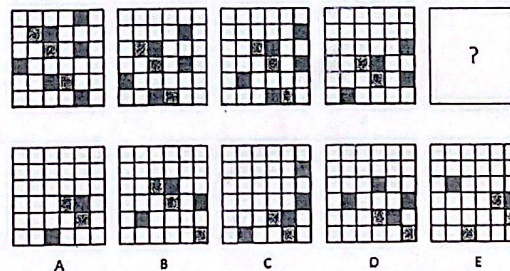
Question 15- What is the next suitable figure from bottom row



Question 16- What is the next suitable figure from bottom row



Question 17- What is the next suitable figure from bottom row



Index No:

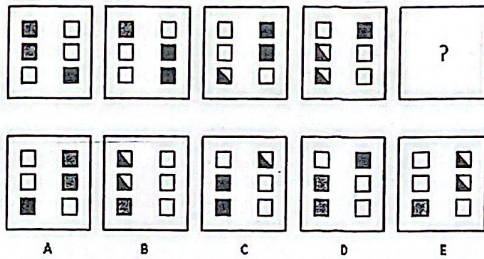
(Aptitude Test 2018 | B Arch Hons and BLA P Dept of Architecture | UOM, Sri Lanka)



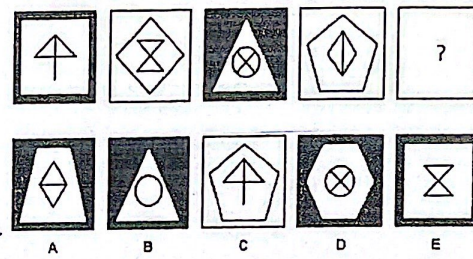
APTITUDE TEST GUIDER

The leading aptitude test guiding programme (University of Moratuwa aptitude tests)

Question 18- What is the next suitable figure from bottom row



Question 19- What is the next suitable figure from bottom row



Question 20- Answer the three questions after reading the paragraph below – circle the most correct answer

Nowadays many environmental organizations in Sri Lanka are concerned with the level and nature of waste in our oceans and our beaches. Controlling waste is important not only because it degrades the beauty of our surroundings but also because accidentally released waste tends to float near the surface of our oceans where it can be consumed by fish, turtles, or seabirds. In addition, poor waste control has many negative effects on humans, individuals companies or different industrial sectors. For example, inadequate waste management at the workplace can lead to accidents involving slips, and falls which may mean lost production time, higher worker compensation costs, higher insurance premiums or lower employee morale.

1. In the past, environmental organizations were not concerned with the level and nature of waste in our oceans - True / false / cannot say
2. Environmental organizations control the nature and level of waste in order to protect fish, turtles and seabirds - True / false / cannot say
3. Poor control of waste negatively impact on day to day work and businesses - True / false / cannot say

Question-21 Identify the missing number within the series

	A	B	C	D	E
20, 30, 25, 35, ?, 40	45	35	25	30	50

Circle the correct answer

A, B, C, D, E

Question-22 Identify the missing number

7	8	20	1
5	6	2	?

A	B	C	D	E
3	16	25	48	17

Circle the correct answer

A B C D E

Question-23 Identify the missing number

5	20	100	3	24
20	80	400	12	?

A	B	C	D	E
86	96	16	106	56

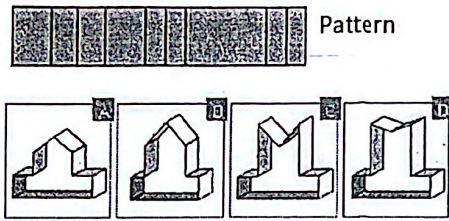
Circle the correct answer

A B C D E

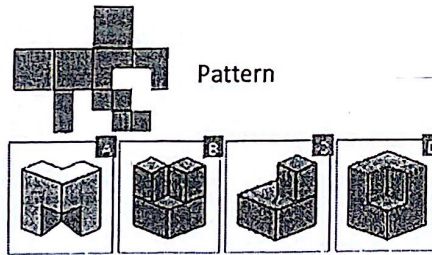
Index No: (Aptitude Test 2018 | B Arch Hons and BLA Hons | Den

UNIVERSITY OF MORATUWA
Page 1 WA
UOM Sri Lanka

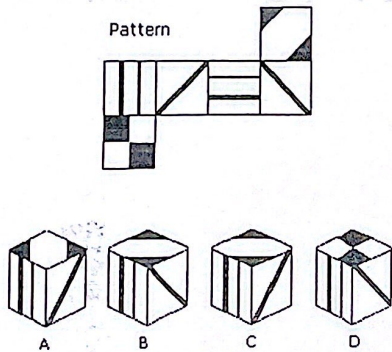
Question 24-Which of the figures shown could be made from the pattern



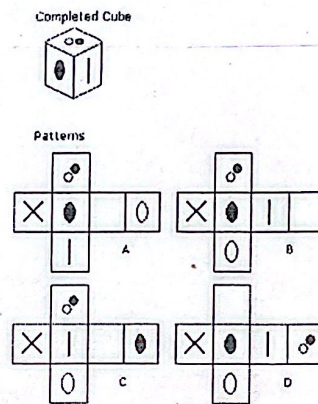
Question 25-Which of the figures shown could be made from the pattern



Question 26-Which of the figures shown could be made from the pattern



Question 27-Which of the figures shown could be made from the pattern



Question 28-A train travelling at 60 Km/h enters a tunnel that is 5 Km long. The train is one Km long. How many minutes does it take for the whole train to pass through the tunnel?

A	B	C	D	E
7	4	10	5	6

Circle the correct answer
A B C D E

Question 29-A total of 800 copies of a DVD was sold. 60% were sold at 50% discount, 20% were sold at 30% discount and the remainder was sold at the full price of SLR 8.95. What was the approximate total revenue in SLR (Rupees)?

A	B	C	D	E
4,679	4,579	4,779	4,499	4,521

Circle the correct answer
A B C D E

Question 30- Identify the missing number at the end of the series

	A	B	C	D	E
516, 497, 478, 459, ?	436	440	438	452	442

Circle the correct answer
A, B, C, D, E

End of the paper